

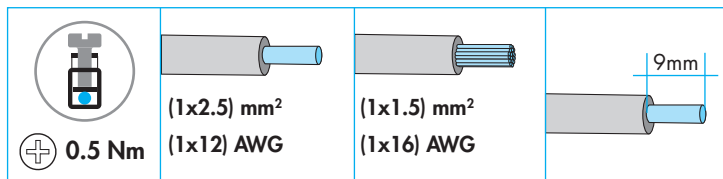
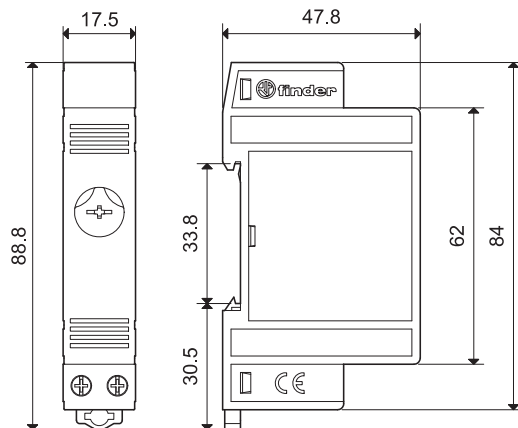


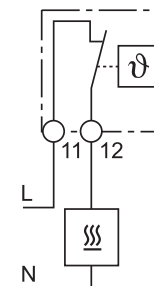
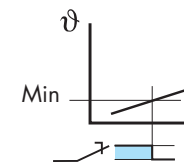
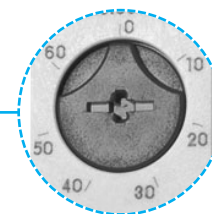
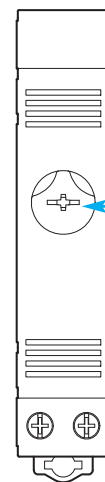
7T.81



	7T.81.0.000.240x	7T.81.0.000.230x
	1 NC (SPST-NC) 10 A 250 V AC	1 NO (SPST-NO) 10 A 250 V AC
	AC1 2500 VA AC15 (230 V AC) 250 VA AC3 (230 V AC) 0.125 kW	
K	7 ± 4	
	(-45...+80)°C	
IP20		



7T.81.0.000.2401 (-20...+40)°C
 7T.81.0.000.2403 (0...+60)°C



7T.81.0.000.2301 (-20...+40)°C
 7T.81.0.000.2303 (0...+60)°C

